

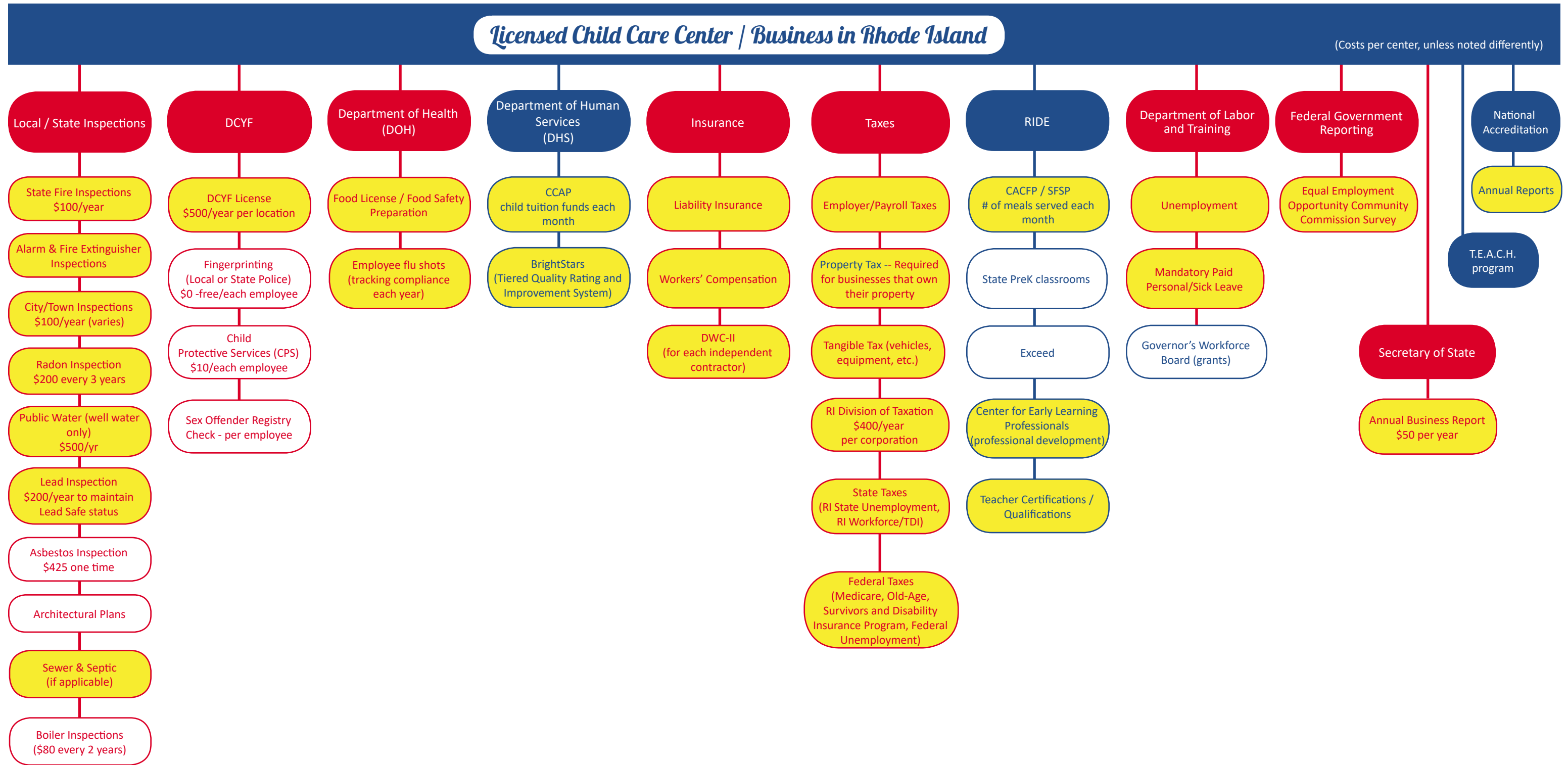
# Required to operate a licensed child care center/business:

Agencies that each center reports to or interacts with to operate a child care center.

Key: Red = Required

Yellow = ongoing

Blue = optional



(Costs per center, unless noted differently)

Additional agencies a child care business interacts with each day, as it relates to operating a child care business:

- Accounting
- Payroll
- Banking
- Legal
- Maintenance, janitorial, construction
- Marketing
- Purchasing (office & school supplies, furniture, food)
- Special Education
- Human Resources
- School Department & Busing (if operating a school age program)

NOTE: All child care/early childcare programs and agencies have different rules and regulations. The system is not seamless for a business owner.

Created by Dr. Mary Ann Shallcross Smith & Rebecca Compton (Dr. Day Care Learning Center) for BOCA members May 2015, Rev. 2/25/19

