



CENTER FOR  
EARLY LEARNING  
PROFESSIONALS

Professional Development • Technical Assistance • Resources

# CELP Overview: ECE PDTA Hub

March 24, 2025



# Center for Early Learning Professionals (CELP)

## Project Overview

# Agenda



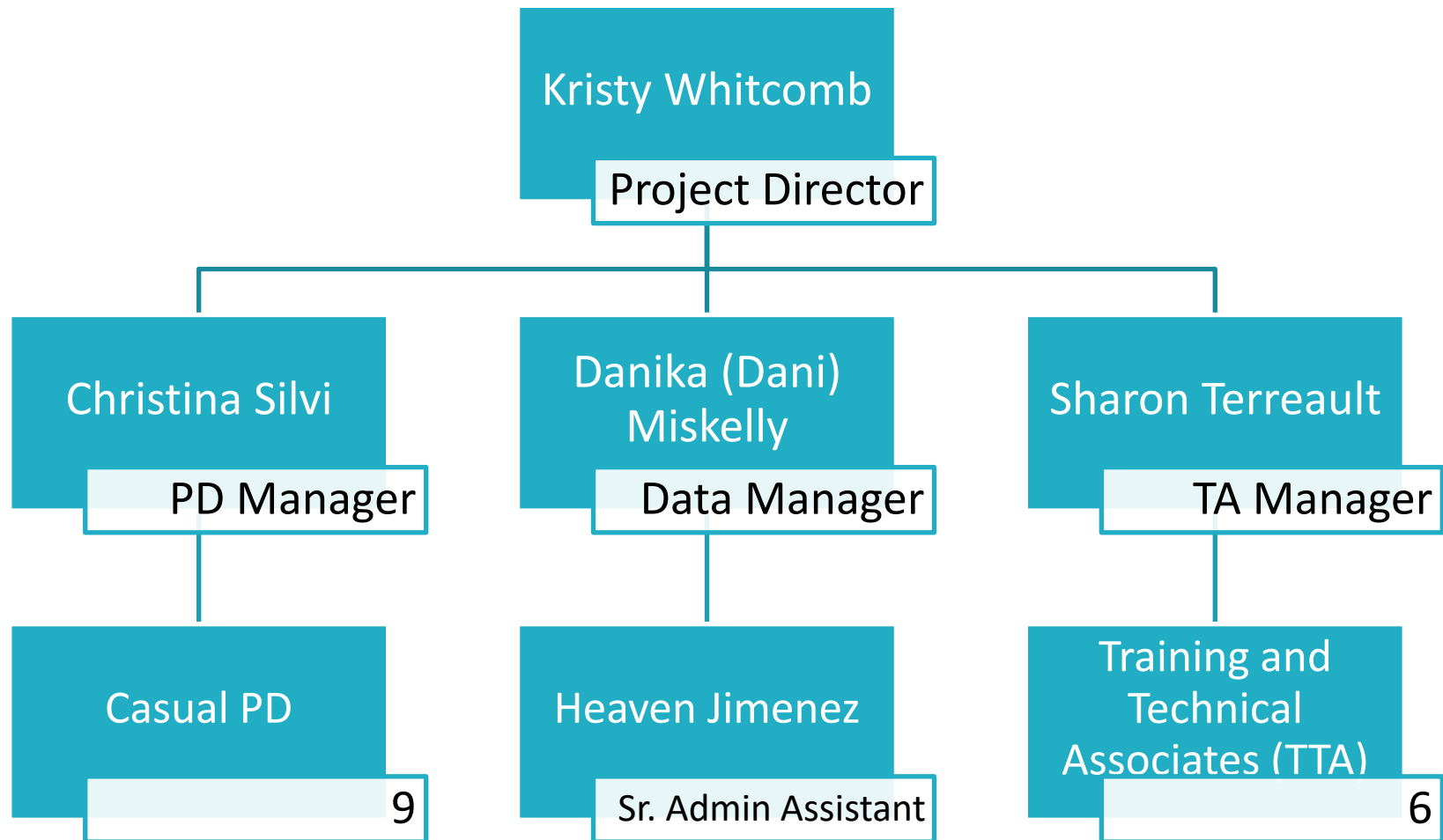
- CELP Overview and Background (Kristy)
  - Background
  - CELP in the ECE Ecosystem
- Professional Development (Christina)
  - Professional Development Approval
  - External Training Verification
- Technical Assistance (Sharon)
  - Technical Assistance
  - QIP

# CELP Background

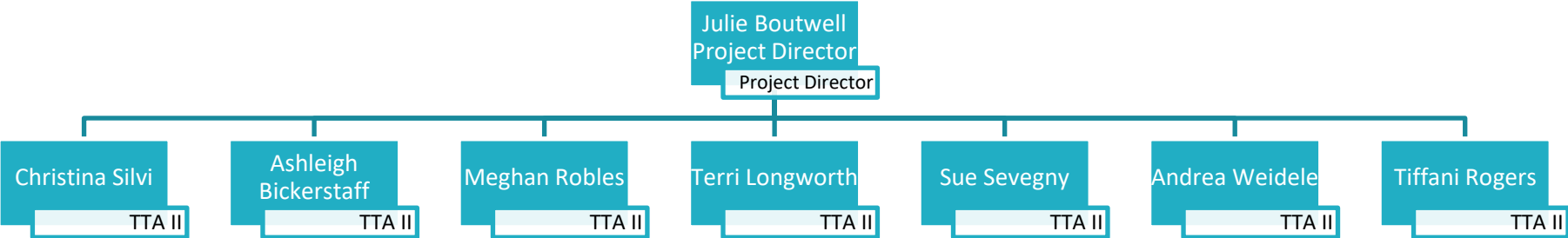


- Opened in 2014 with original funding from Race to the Top federal funding
- Rhode Island Hub for ECE professional development (PD) and program improvement (TA); CELP and RI State Pre-K PDTA
- 18 regular staff, 9 casual staff

# CELP Org Chart



# RI State Pre-K PDTA Org Chart



# CELP in the RI Early Childhood Ecosystem

- Rhode Island Early Childhood Field
  - 414 child care centers.
  - 398 Family Child Care providers
    - 299 identify as being Spanish speakers (many are bilingual)
    - 95 identify as English-only
    - 1 Creole (bilingual) 2 Portuguese (bilingual)  
1 Russian (bilingual)



# Professional Development

Christina



# CELP Professional Development

CELP provides free PD for the ECE workforce in both English and Spanish

CELP course catalog includes:

- 10-15 instructor-led CELP PD series each semester
- 60+ online self-paced CELP courses on Talent LMS
- 21 online courses offer CEUs
- [77 titles from ProSolutions Training](#) (Health/Safety and additional topics)
- Catalog of approved PD trainings (local and national organizations)

# PD Approval Processes

1. For Trainers and Organizations
  - Submit PD approval application
2. For Participants
  - New Training Verification process required by DHS
  - To apply hours to licensing regs, ALL external PD must go through verification process

# RISES and CELP: System Communication and Clarification

- CELP pushes professional development data (overnight)
- RISES Clarification – these do NOT go into CELP accounts. These should be uploaded to RISES account.
  - Higher Ed / diplomas
  - Other credit-bearing courses



# Technical Assistance

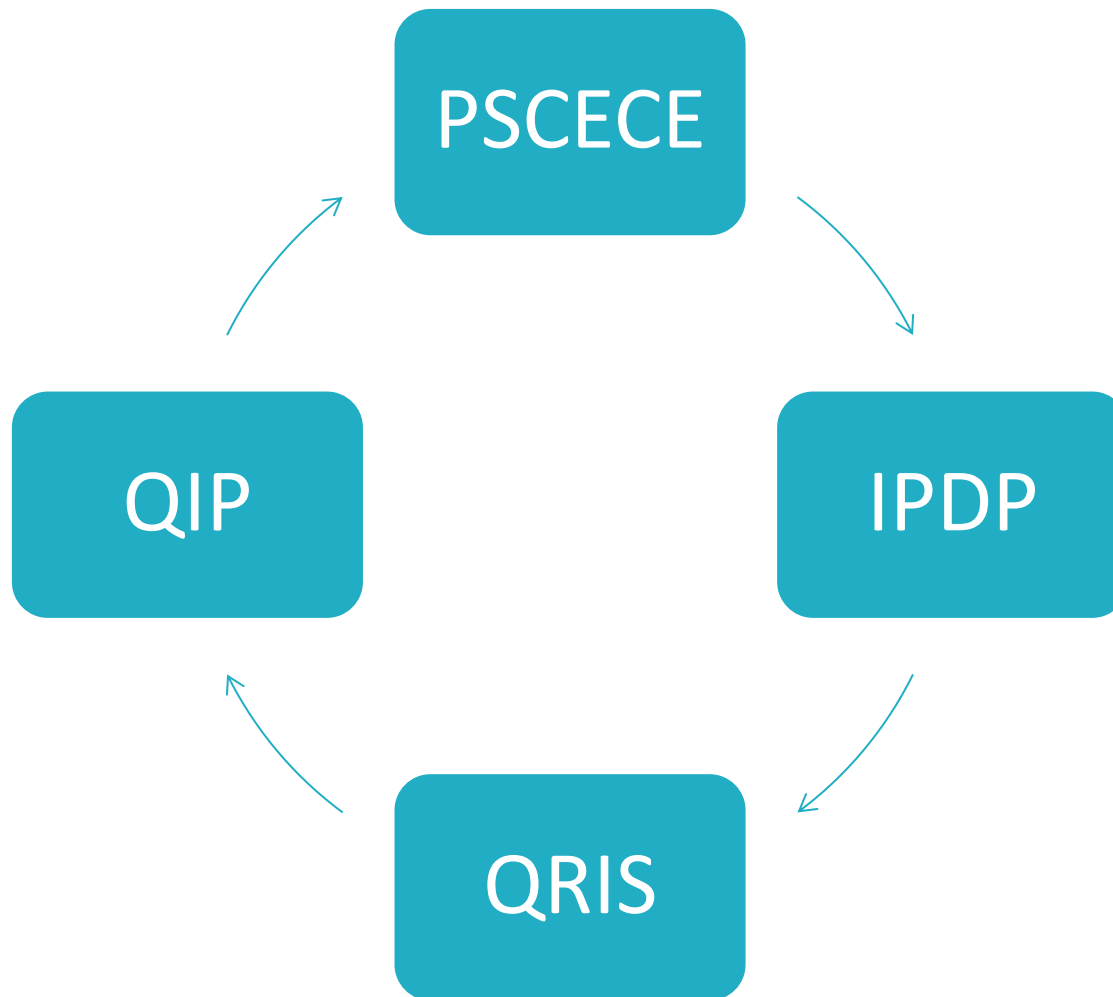
Sharon

# What is TA?



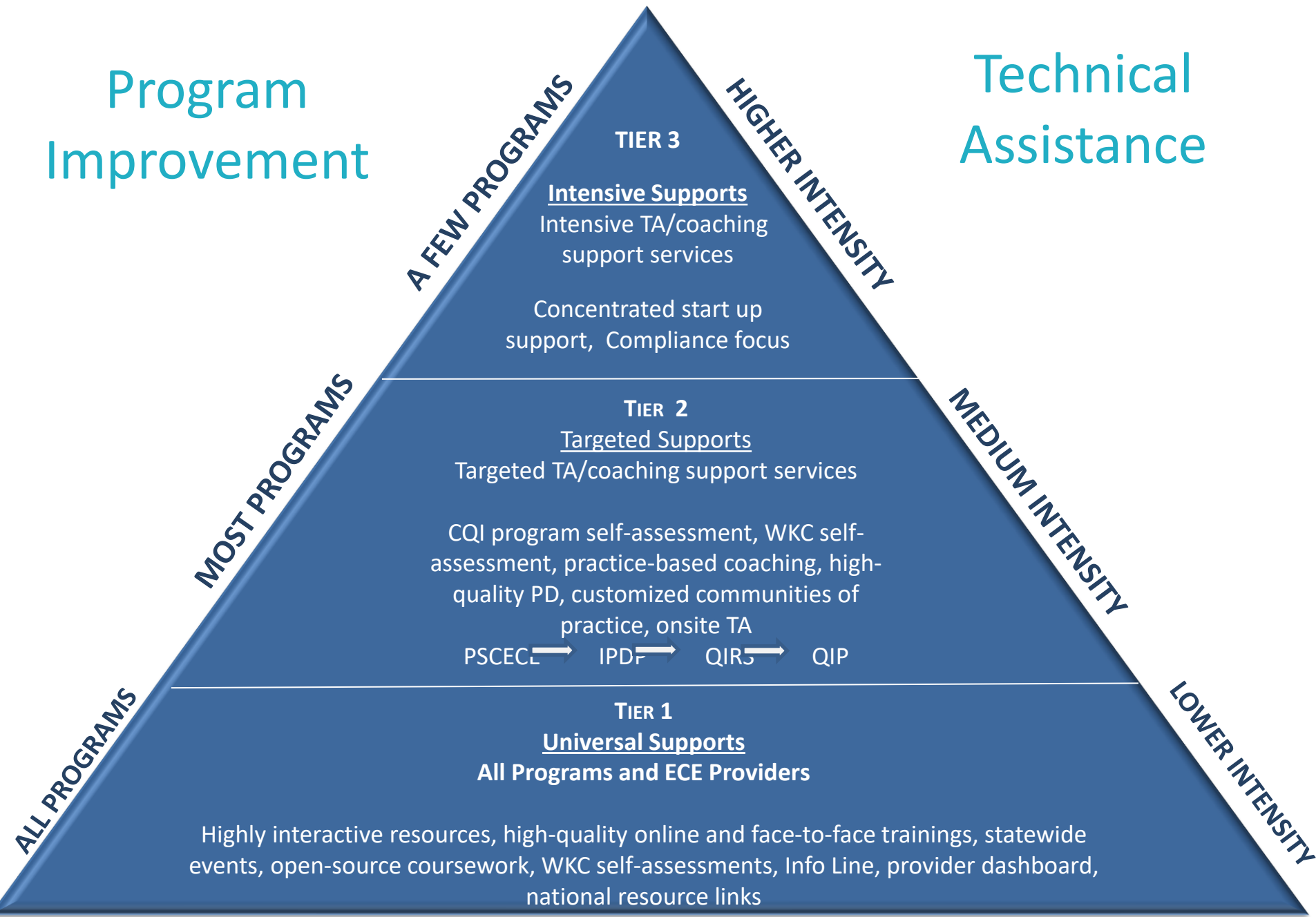
TA is specialized support provided to childcare programs to improve quality, ensure compliance with regulations, and enhance professional development.

# Continuous Quality Improvement



Program Improvement

Technical Assistance



High Quality PDTA

# Program Quality Improvement (Technical Assistance)

- Continuous Quality Improvement (CQI)
- Quality Improvement Plans (QIP)
- Individual Professional Development Plans (IPDP)
- Quality Rating Improvement System (QRIS)
- Coaching Supports





# Resources



CENTER FOR  
EARLY LEARNING  
PROFESSIONALS

A decade of collaboration with Rhode Island educators

[Rhode Island ECE Workforce  
Pathway Resources](#)



# CELP Newsletter and Survey Reminder

- **CELP ‘Tune in Tuesday’ Newsletter**
  - Sent weekly – easy to sign up and receive it
  - This is a great way to stay in the loop for any updates re: systems, professional development, community resources and more!
  - Sign up is easy: <https://center-elp.org/about/contact-us/>
  - [Website: What’s New!](#)
- **CELP Annual PDTA Survey**
  - [Take the survey](#)
  - [Tome la encuesta](#)



CENTER FOR  
**EARLY LEARNING  
PROFESSIONALS**

Professional Development • Technical Assistance • Resources

Kristy Whitcomb  
[kwhitcomb@edc.org](mailto:kwhitcomb@edc.org)

Christina Silvi  
[Csilvi@edc.org](mailto:Csilvi@edc.org)

Sharon Terreault  
[STerreault@edc.org](mailto:STerreault@edc.org)

General Information  
[info@center-elp.org](mailto:info@center-elp.org)